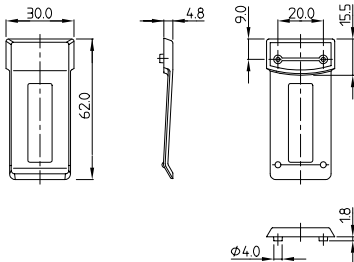




Suitable for OKW cases:

- DATEC-POCKET-BOX L, M and S
- SHELL-TYPE CASE 85 and 110
- FLAT-PACK CASE N 100



Article / Version

Clip, off-white RAL 9002

Clip, black RAL 9005

Supply

1 clip, 1 mounting kit of 2 self-tapping screws \varnothing 2.2 x 6 mm

BELT/ POCKET CLIP

Universal clip. Two location pillars for mounting into boreholes \varnothing 4.2 mm at a center distance of 20 mm. Simple mounting by means of 2 self-tapping screws \varnothing 2.2 x 6 mm.

Part-No.

A 91 72 107

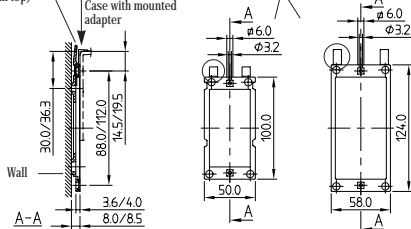
A 91 72 109



*Mounting angle (C) on the adapter serves as a support to locate the case in the right position. After attachment of the adapter, the mounting angles can be easily removed.

Wall-suspension element (hidden attachment, only "tongue of latch-in mechanism" visible from top)

Adapter available in two dimensions with mounting angle*



Version / Supply

Plastic, 1 wall-susp. element each, 1 adapter 50 x 100 mm and assembly kit, recommended for shell-type cases 110 (without battery compart.), flat-pack cases 120, desk cases 190.

Plastic, 1 wall-susp. element each, 1 adapter 58 x 124 mm and assembly kit, recommended for shell-type cases 155/190 (without battery compart.), flat-pack cases 150/189/210, desk cases 138.

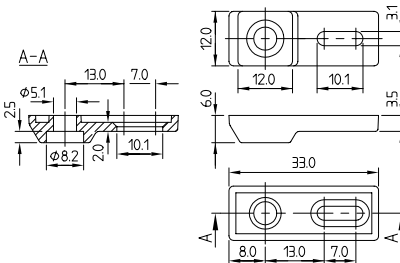
WALL-SUSPENSION ELEMENTS

Universally applicable, for small plastic cases with 3 mm wall thickness. For easy machining. The adapter is screwed down together with the base part of the case. Due to preshaped pockets, each case can be quickly and securely unlatched from the wall-suspension element.

Part-No.

B 13 50 048

B 13 60 048



Version

Polyamide, pebble grey RAL 7032

Supply

4 pieces

WALL-MOUNTING BRACKETS

Exterior wall-mounting elements for the SHELL-TYPE CASES 110, 155 and 190. Fastening to the case by means of the case fixing screws.

Part-No.

A 92 04 108

TILT FOOT BAR

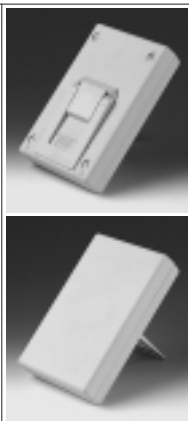
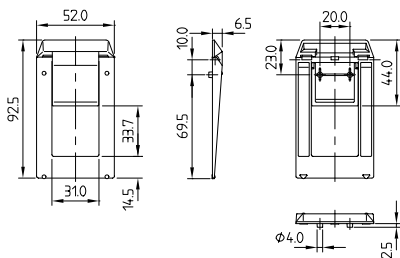
Universal tilt foot bar. Can be placed in any position to choose an ergonomical reading angle.

Simple mounting with 2 self-tapping screws, $\varnothing 2.2 \times 6$ mm.

Necessary location holes: $2 \times \varnothing 4.2$ mm at a center distance of 20 mm.

Suitable for the OKW cases:

- SHELL-TYPE CASE 110 and 155
 - HAND-HELD-BOX P and M
 - FLAT-PACK CASE
- »Special version of tilt foot bar suitable for DATEC-MOBIL-BOX M and S see page 30.«



Part-No.

A 92 50 807

A 92 50 809

A 92 07 150

Article / Version

Tilt foot bar of ABS, off-white RAL 9002

Tilt foot bar of ABS, black RAL 9005

Clear non-slip pads

Supply

1 tilt foot bar

2 self-tapping screws $\varnothing 2.2 \times 6$ mm

2 pieces $\varnothing 6.5$ mm

CASE FEET

Available in 2 versions:

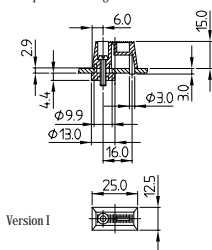
Version I:

Case feet for universal application.

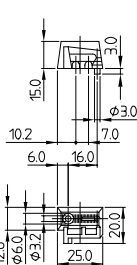
Version II:

Same version as version I but for combination with the tilt foot bar (next item). Clip mechanism for two different canting angles.

Example of mounting:



Version II



Part-No.

A 92 01 008

A 92 02 008

Article

Case feet, polystyrene, basalt grey RAL 7012

Case feet, polystyrene, basalt grey RAL 7012

Version

I

II

Supply

2 feet with accessories

2 feet with accessories



TILT FOOT BAR

Part-No.

A 93 09 009

A 93 16 009

A 93 22 009

A 93 23 009

Dim. in mm

A

a

Version /

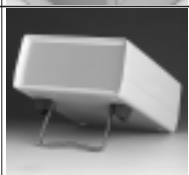
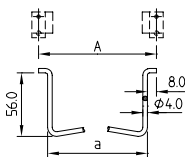
Supply

104 88 Galvanized steel

174 158 1 wire section

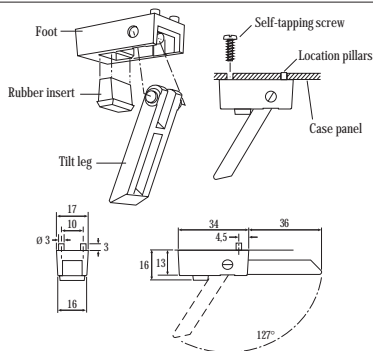
234 218

246 230

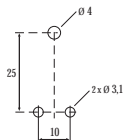


ACCESSORIES

Case feet, Anti-slide feet, Self-tapping screws, Battery clips, Battery spacer



Case drilling details



Version	Colour	Material
I	off-white, RAL 9002, rubber inserts pebble grey	ABS (UL 94 HB)
II	off-white, RAL 9002, rubber inserts pebble grey	ABS (UL 94 HB)
I	black, RAL 9005, rubber inserts pebble grey	ABS (UL 94 HB)
II	black, RAL 9005, rubber inserts pebble grey	ABS (UL 94 HB)

CASE FEET

Universal case feet for all types of plastic and metal enclosures with max. 4 mm wall thickness.

Version I:

- 4 foot mouldings.
- 4 non-slip rubber inserts.
- 4 self-tapping screws.

Version II:

As above but also including 2 tilt legs.

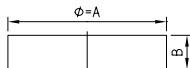
Part-No.

A 92 57 107

A 92 57 207

A 92 57 109

A 92 57 209



Dim. in mm	Colour	Material / Supply
A = Φ B		
6.5 2	transparent	Silicon, 2 pcs.
10 2.9	transparent	Silicon, 2 pcs.
12 3.5	transparent	Silicon, 2 pcs.

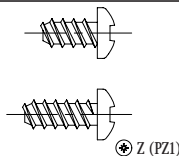
ANTI-SLIDE FEET

Part-No.

A 92 07 150

A 92 10 290

A 92 12 330



Self-tapping crosshead screw, specifically suitable for plastics.
For fastening components, boards and PCBs onto pillars.

Version	Supply
2.5 x 6 mm	1 pc.
3 x 6 mm	1 pc.
3 x 8 mm	1 pc.

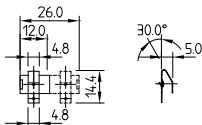
SELF-TAPPING SCREWS

Part-No.

A 03 05 031

A 03 06 031

A 03 08 031



For round cells only (AA type). Useful for DATEC-MOBIL-BOX, SHELL-TYPE-CASE, LUX CASE and HAND-HELD-BOX.

Version / Supply
large, double contact, tin plated, 1 pc.
small, single contact, tin plated, 1 pc.
large, double contact, nickel plated, 1 pc.
small, single contact, nickel plated, 1 pc.

BATTERY CLIPS

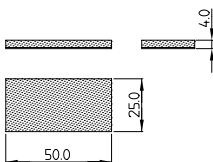
Part-No.

A 91 93 003

A 91 93 004

A 91 93 005

A 91 93 006



Suitable for:
- DATEC-POCKET-BOX L
- DATEC-MOBIL-BOX S
- HAND-HELD-BOX N
- LUX-CASES 150 and 190
- SHELL-TYPE CASES
Versions III and IV

Version / Supply
PE foam with one-sided adhesive coating, 1 pc.

BATTERY SPACER

It serves to compensate for the differences in height and to secure the mignon cells (AA) within the battery compartments, which can also hold a 9 V flat battery (PP3).

Part-No.

A 92 50 250

NEW: Universal handle – available in any width almost for any housing.

The handle can be mounted from the outside and inside. It can be removed in the 135° position. Ratchet with 30° indexing. If the handle is overloaded the ratchet will automatically disengage to avoid damaging the mechanism!

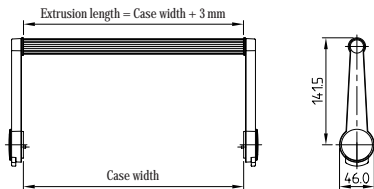


Supply:

- 2 side arms.
- Fastening elements.
- 1 aluminium center section (cut to your requested length).

Order data:

Order the side arm kit and give us the width of your housing. We will supply the components as a set with the aluminium profile of the required length.

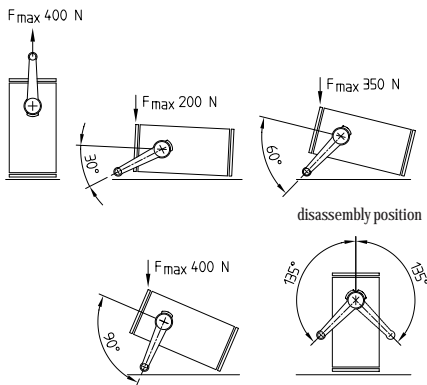


STANDARD COLOURS

- Side arms: Off-white, RAL 9002.
- Push buttons: Volcano, NCS 5502-G.
- Center section: Silver, matt anodized.

MATERIAL

Side arms glass reinforced polyamide. The center section extruded matt anodized aluminium. Stainless springs.



Part-No.

A 93 00 722

Article

Side arms kit

Colour

Side arms off-white RAL 9002 / push buttons volcano

HANDLE BAR / BAIL ARM

Possible to mount from the inside



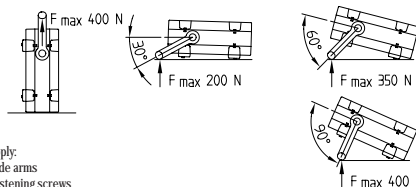
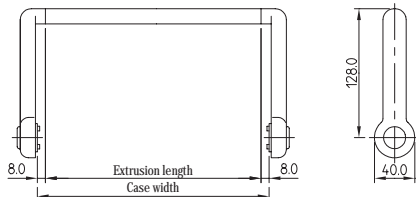
STANDARD COLOURS

One-coloured:
Off-white, RAL 9002 or black, RAL 9005.

Two-coloured:
Side arms off-white, RAL 9002 and push buttons pebble grey, RAL 7032 or Side arms pebble grey, RAL 7032 and push button off-white, RAL 9002.

MATERIAL

Side arms glass reinforced polyamide. The middle section extruded matt anodized aluminium.



Supply:
2 side arms
2 fastening screws
1 requested aluminium center section

Article	Colour combination
Side arms kit	off-white RAL 9002 / push buttons pebble grey RAL 7032
Side arms kit	off-white RAL 9002 / push buttons off-white RAL 9002
Side arms kit	pebble grey RAL 7032 / push buttons off-white RAL 9002
Side arms kit	black RAL 9005

HANDLE BAR IN INJECTION MOULDED PLASTIC

Universal handle – available in any width almost for any housing.

Strong ratchet with 30° indexing.

Order data:

Order the side arm kit and give us the width of your housing. We will supply the components as a set with the aluminium profile of the required length.

Part-No.

A 93.00.016

A 93.00.017

A 93.00.018

A 93.00.015

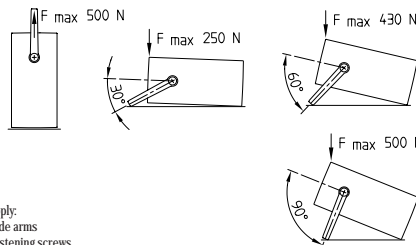
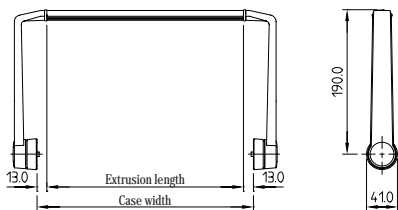


STANDARD COLOURS

Side arms and mechanism off-white, RAL 9002, push button pebble grey, RAL 7032. Anti-glide rubber inserts black.

MATERIAL

Side arms and mechanism diecast zinc. Push button plastic moulded glass reinforced polyamide. Extruded center section matt anodized aluminium. Anti-glide inserts in rubber.



Supply:
2 side arms
2 fastening screws
1 requested aluminium center section

Article	Colour combination
Side arms kit	Side arms off-white RAL 9002 / push buttons pebble grey RAL 7032

HANDLE BAR IN DIECAST ZINC

Universal robust handle – available in any width almost for any housing.

Strong ratchet with 30° indexing.

Order data:

Order the side arm kit and give us the width of your housing. We will supply the components as a set with the aluminium profile of required length.

In order to improve the stability, we recommend gluing the aluminium profiles with the lateral parts.

Part-No.

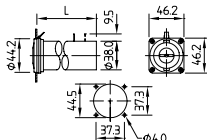
A 93.00.014

Battery holders for direct installation in front and rear panels.
Battery replacement is considerably easier – housings need not be opened.

MATERIAL
Gfr. polyamide, colour black,
Operat. temp. up to + 70°C.

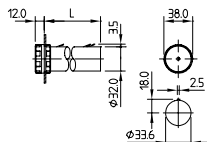
FOR 1.5 V MONO CELLS (D)

Part-No.	Version	Mounting length L
A 93 01 110	for 1 cell	78.6 mm
A 93 01 120	for 2 cells	143.0 mm
A 93 01 130	for 3 cells	203.0 mm



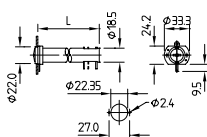
FOR 1.5 V BABY CELLS (C)

Part-No.	Version	Mounting length L
A 93 01 210	for 1 cell	62 mm
A 93 01 220	for 2 cells	110 mm
A 93 01 230	for 3 cells	159 mm



FOR 1.5 V MIGNON CELLS (AA)

Part-No.	Version	Mounting length L
A 93 01 310	for 1 cell	68.2 mm
A 93 01 320	for 2 cells	118.6 mm
A 93 01 330	for 3 cells	169.5 mm

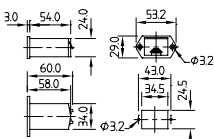


Battery holders with pull-out drawer. Snap-in system permits safe opening by hand. Direct contact system with rear soldering contacts in the housing.

MATERIAL
Gfr. polyamide, colour black.

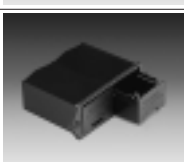
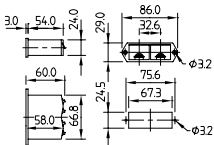
FOR 9 V FLAT BATTERIES (PP3)

Part-No.	Version	Outside dim. in mm
A 93 02 510	for 1 battery (one drawer)	53.2 x 29 x 58



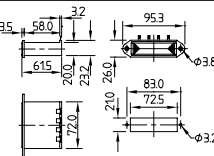
FOR 9 V FLAT BATTERIES (PP3)

Part-No.	Version	Outside dim. in mm
A 93 02 520	for 2 batteries (two drawer)	86 x 29 x 58



FOR 1.5 V MIGNON CELLS (AA)

Part-No.	Version	Outside dim. in mm
A 93 02 540	for 4 cells (one drawer)	95.3 x 26 x 61.5



ACCESSORIES

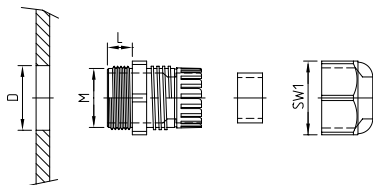
Battery holders

ASSEMBLY The holders can be lined up. There are lateral connecting grooves and two fastening holes.	Insert battery holders. Sturdy construction for industrial uses. With direct line connection – can be soldered or used with plugs 2.8 x 0.3 mm. With pins for boards.	MATERIAL Polyamide, colour black.												
	<table border="1" data-bbox="518 407 756 451"> <tr> <td>Outside dim. in mm</td> <td>Battery dim. in mm</td> </tr> <tr> <td>38.3 x 34.9 x 71.0</td> <td>ø 34.2 x 61.5</td> </tr> </table>	Outside dim. in mm	Battery dim. in mm	38.3 x 34.9 x 71.0	ø 34.2 x 61.5	FOR 1.5 V MONO CELL (D) Part-No. A 93 03 110								
Outside dim. in mm	Battery dim. in mm													
38.3 x 34.9 x 71.0	ø 34.2 x 61.5													
	<table border="1" data-bbox="518 582 756 626"> <tr> <td>Outside dim. in mm</td> <td>Battery dim. in mm</td> </tr> <tr> <td>30.2 x 26.7 x 59.2</td> <td>ø 26.2 x 50.0</td> </tr> </table>	Outside dim. in mm	Battery dim. in mm	30.2 x 26.7 x 59.2	ø 26.2 x 50.0	FOR 1.5 V BABY CELL (C) Part-No. A 93 03 210								
Outside dim. in mm	Battery dim. in mm													
30.2 x 26.7 x 59.2	ø 26.2 x 50.0													
	<table border="1" data-bbox="518 757 756 800"> <tr> <td>Outside dim. in mm</td> <td>Battery dim. in mm</td> </tr> <tr> <td>17.6 x 25.1 x 60.3</td> <td>ø 14.5 x 50.5</td> </tr> </table>	Outside dim. in mm	Battery dim. in mm	17.6 x 25.1 x 60.3	ø 14.5 x 50.5	FOR 1.5 V MIGNON CELL (AA) Part-No. A 93 03 310								
Outside dim. in mm	Battery dim. in mm													
17.6 x 25.1 x 60.3	ø 14.5 x 50.5													
	<table border="1" data-bbox="518 931 756 975"> <tr> <td>Outside dim. in mm</td> <td>Battery dim. in mm</td> </tr> <tr> <td>13.6 x 17 x 52.5</td> <td>ø 10.5 x 44.5</td> </tr> </table>	Outside dim. in mm	Battery dim. in mm	13.6 x 17 x 52.5	ø 10.5 x 44.5	FOR 1.5 V MICRO CELL (AAA) Part-No. A 93 03 410								
Outside dim. in mm	Battery dim. in mm													
13.6 x 17 x 52.5	ø 10.5 x 44.5													
	<table border="1" data-bbox="518 1106 756 1150"> <tr> <td>Outside dim. in mm</td> <td>Battery dim. in mm</td> </tr> <tr> <td>29.6 x 26.3 x 58.2</td> <td>ø 26.5 x 17.5 x 48.5</td> </tr> </table>	Outside dim. in mm	Battery dim. in mm	29.6 x 26.3 x 58.2	ø 26.5 x 17.5 x 48.5	FOR 9 V FLAT BATTERY (PP3) Part-No. A 93 03 510								
Outside dim. in mm	Battery dim. in mm													
29.6 x 26.3 x 58.2	ø 26.5 x 17.5 x 48.5													
	PLUG-IN CONTACTS For 9 V flat battery (PP3). UL / CSA approval. <table border="1" data-bbox="259 1266 766 1324"> <tr> <td>Version</td> <td>Cable length</td> <td>Contact diameters</td> <td>Part-No.</td> </tr> <tr> <td>lateral</td> <td>ca. 100 mm</td> <td>ø 5.7 / 5.3 mm</td> <td>A 91 60 003</td> </tr> <tr> <td>T-shape</td> <td>ca. 100 mm</td> <td>ø 5.7 / 5.3 mm</td> <td>A 91 93 002</td> </tr> </table>	Version	Cable length	Contact diameters	Part-No.	lateral	ca. 100 mm	ø 5.7 / 5.3 mm	A 91 60 003	T-shape	ca. 100 mm	ø 5.7 / 5.3 mm	A 91 93 002	Part-No. A 91 60 003 A 91 93 002
Version	Cable length	Contact diameters	Part-No.											
lateral	ca. 100 mm	ø 5.7 / 5.3 mm	A 91 60 003											
T-shape	ca. 100 mm	ø 5.7 / 5.3 mm	A 91 93 002											

CABLE GLANDS WITH PULL RELIEF

Part-No.

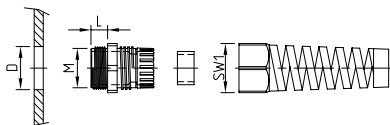
C 23 12 418	M12x 1,5
C 23 16 418	M16x 1,5
C 23 20 418	M20x 1,5
C 23 20 428	M20x 1,5
C 23 25 418	M25x 1,5
C 23 32 418	M32x 1,5



CABLE GLANDS WITH PULL RELIEF AND BENDING PROTECTION

Part-No.

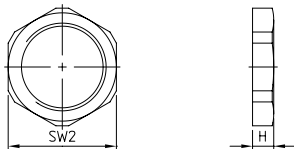
C 23 12 518	M12x 1,5
C 23 16 518	M16x 1,5
C 23 20 518	M20x 1,5
C 23 20 528	M20x 1,5
C 23 25 518	M25x 1,5



COUNTERNUTS

Part-No.

C 23 12 117	M12x 1,5
C 23 16 117	M16x 1,5
C 23 20 117	M20x 1,5
C 23 25 117	M25x 1,5
C 23 32 117	M32x 1,5

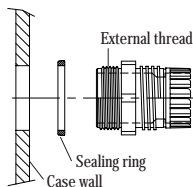


SEALING RING FOR EXTERNAL THREAD

Mounting between housing and gland flange to preserve the high protection class **IP 68** of the OKW cable glands.

Part-No.

C 23 12 126	M12x 1,5
C 23 16 126	M16x 1,5
C 23 20 126	M20x 1,5
C 23 25 126	M25x 1,5
C 23 32 126	M32x 1,5



Cable glands of the best material for shake and twist-proof cable lead-in for OKW housings. High protection class IP 68.

STANDARD COLOURS

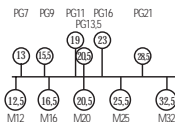
Cable glands silver grey, RAL 7001. Counternuts light grey, RAL 7035. Sealing ring natural-coloured.

MATERIAL

Cable glands and counternuts polyamide. Sealing ring of polyethylene.

Comparison between PG and metric thread:

Mounting drills (ø in mm)



	KEY WIDTH					CLAMP RANGES of all cable glands
	Dim. in mm		D	L	H	
	SW1	SW2				
M12x 1,5	15	17	12,5	8	5	ø 3 - 6,5
M16x 1,5	22	22	16,5	8	5	ø 5 - 10
M20x 1,5	24	26	20,5	11	6	ø 6 - 12
M20x 1,5	27	26	20,5	15	6	ø 10 - 14
M25x 1,5	33	32	25,5	15	6	ø 13 - 18
M32x 1,5	42	41	32,5	15	7	ø 18 - 25